



# Beulah Junior School Newsletter

Friday 20th October 2023



## Harvest Festival Competition

Yr 6 Supernova = 105  
Yr 6 Milky Way = 94  
Yr 4 Cosmos = 85  
Yr 4 Saturn = 69  
Yr 3 Venus = 58  
Yr 5 Mercury = 40  
Yr 3 Pluto = 28  
Yr 5 Neptune = 25

Dear Parents and Carers,

October has brought a change in the weather and reminded us all to be prepared for rain showers, freezing temperatures and warm sunny moments. Through all of this, the children have worked hard in all areas of the curriculum. We also enjoyed our Times Tables Rock Stars Day just this week and you will see some of the photos in the following pages.

We are incredibly thankful for all of your kind donations for our Harvest Festival Competition. As you can see above, the winning class is Supernova who bought in 105 items! They also helped to take all of the donations down to our local foodbank and were very gratefully received by the team at His Grace Evangelical Outreach.

Thank you to all of our parents and carers who were able to attend our recent parents' and carers' evening. If you were not able to make it, please do get in touch with your child's class teacher. It is never too late to have a meeting or phone call with them. Keeping this communication going really does enable us to work together in supporting your children's progress.

We are very open to suggestions about anything else you would like us to pop into the newsletter. Please feel free to contact the office with your ideas: [office@beulah-jun.croydon.sch.uk](mailto:office@beulah-jun.croydon.sch.uk)

Wishing you and your families an enjoyable half-term break,  
Mrs B Warwick



## Key Dates and Events

Friday 20th October

**School breaks up for the half term holiday**  
Usual finish time of 3.15 pm

Wednesday 1st November

**First day back after the half term holiday**  
As usual, gates open at 8.35 am and close at 8.45 am

# Our Assembly Themes and Core Values this Month



Wk 1 - 2.10.23



The theme of this year's UK Black History month has been 'Celebrating Our Sisters'. The aim of this theme has been to learn about Black and Mixed Heritage British women who have shaped history. We have learnt about their achievements and accomplishments. There are many influential Black British women from different industries. Our core value this week was **Unity**!

Wk 2 - 9.10.23

## Sporting Greats

Ebony Rainford-Brent Maggie Alphonsi Heather Watson Dina Asher-Smith



## Experts in the Arts

Lorraine Pascale Yolanda Brown OBE Malorie Blackman OBE



## Musical Inspirations

Mel B Emeli Sandé Shirley Bassey Leigh-Anne Pinnock and Jade Thirlwall



During this week's assembly and during some of our out class time, we found out more about Black British women from different industries.

Our core value this week was **Respect**!

Wk 3 - 16.10.23



We used today as an opportunity for everyone to reflect upon what they are thankful for.

Often, we don't take the time to say thank you. We thought about ways in which we could thank someone we were grateful to today.

We reflected on ways in which we could show our gratitude and these included: writing a thank-you letter; drawing a picture; asking someone new to play or even just saying thank you!

Our core value this week was **RESPECT**



<https://play.ttrockstars.com/auth/school/student>

It was great to see everyone dressed up on our Times Table Rock Stars Day this week. The children also enjoyed lots of timestable activities. They even had a battle of the bands on the Times Table Rock Stars website. Please remember to encourage your children to use the Times Table Rock Stars website. It is a great way from them to learn their timestables. Many of you will be aware that they need to know all of their timestables up to the 2 times table before the end of Year 4. All Year 4 children also have to take part in an assessment set by the Department for Education.



If you would like your child to appear in our newsletters, please make sure you have given the office permission for this. We took lots of photos on Times Table Rock Stars Day but have not been able to share many of them with you.

# Year 3 - TT Rock Stars' Day

We played games using our multiplication and division skills.

**Keep practising those timestables and rocking on year 3!**

Here is Venus class dressed as rock stars:



Here is Pluto class dressed as rock stars:



# Year 3 - Cooking and Nutrition: Eating Seasonally

In this DT unit, the children started off thinking about fruits that grow in this country and ones we import from other countries. Using fruits that grow in Japan, children made some fruit skewers.



# Year 3 - Cooking and Nutrition: Eating Seasonally

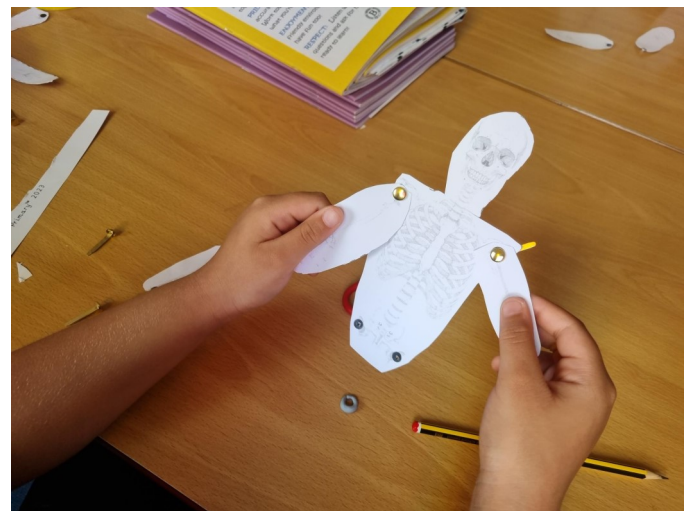
Throughout this DT unit, children in Year 3 thought about the fruits and vegetables that grow in this country during the different seasons. They used this knowledge to select vegetables that grow in England in Autumn, to create their own fruit tarts.



# Year 3 - Animals: Movement and Nutrition

In Science this half-term, we have been looking at skeletons and muscles in humans and other animals. We have also been learning what makes a balanced meal.

Here are a few pictures from Pluto making skeletons:

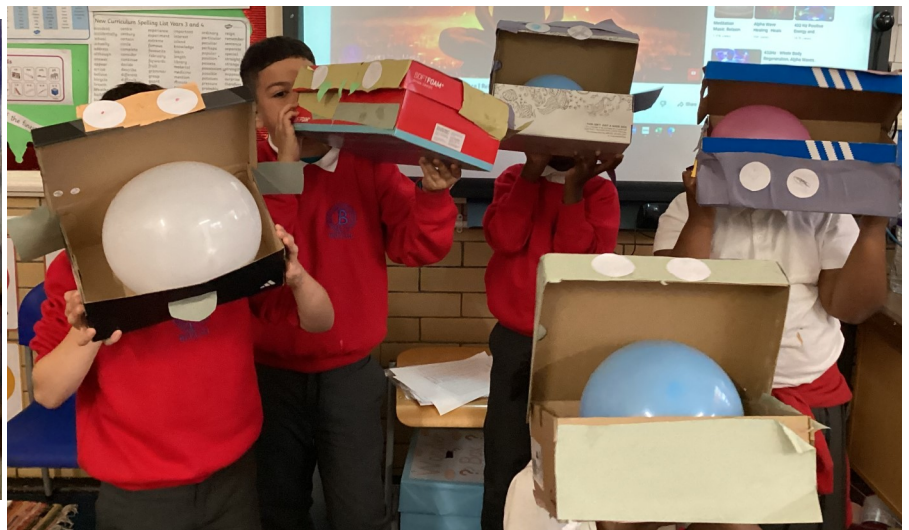
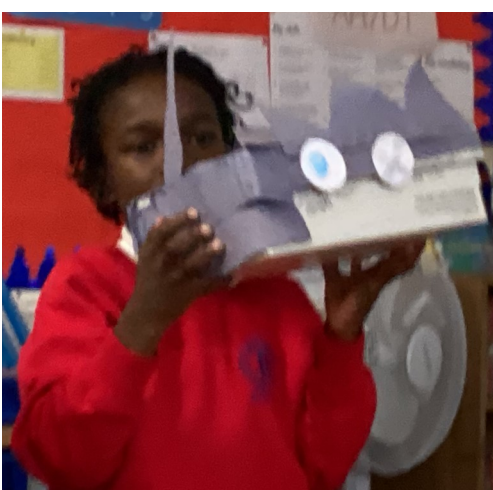


A few pictures from when Pluto made paper hands to show how the muscles work with the bones to move our fingers:



# Year 3 - Mechanical Systems: Pneumatic Toys

Throughout this DT unit, children in Year 3 learned about how pneumatic systems use air to work. They designed and created their own pneumatic toys using balloons and boxes!





## Class P.E. Days

Here is a reminder of the PE days for each class

Yr 3 Venus: Tuesday and Thursday

Yr 3 Pluto: Wednesday and Friday

Yr 4 Saturn: Tuesday and Thursday

Yr 4 Cosmos: Tuesday and Thursday

Yr 5 Neptune: Monday and Wednesday

Yr 5 Mercury: Monday and Wednesday

Yr 6 Milky Way: Tuesday and Wednesday

Yr 6 Supernova: Tuesday and Wednesday

## P.E. Kits

As you are all aware, children will now wear their **PE kits to school** on the days when they have PE. Here is a reminder about what the children should wear for this:

**Plain black shorts / jogging bottoms / leggings**



**Plain black or white t-shirt    School red jumper or cardigan**

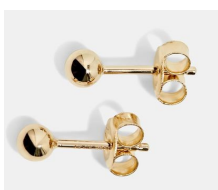


**Plain black plimsolls or plain black trainers**



## Earrings

Please ensure that children are only wearing **small stud earrings** to school.



## Attendance and Punctuality



Gates **open at 8.35am and close at 8.45am**. After this time, children will need to be brought into school via the main office.

All children arriving once the school gate is locked **MUST** enter the school via the school office.

Parents will be asked to give a reason for their lateness.

At **8:55am**, the school registers are closed, any children arriving in the class room after this time will be marked as late in the class register (**L**).

At **9:25am**, any children arriving in the school office after this time will be marked as late and **unauthorised** in the class register (**U**).

The **end of the school day, 3.15pm**, remains the same and we appreciate your support in collecting the children on time. Children not collected by 3.25pm will be taken to the school office for collection.

## Morning Break Snacks

Please ensure you are not sending your children into school with any sweets, crisps, biscuits, chocolate or energy drinks.



We are promoting healthy eating and to support this have limited the morning snacks to fruit, yoghurt, cheese snacks and **nut free** cereal bars. **If your child brings the wrong type of snack to school, you will receive a reminder text about this.**





# Beulah Junior School

Beulah Road • Thornton Heath • Croydon • CR7 8JF  
Tel 020 8653 4921  
E-mail: office@beulah-jun.croydon.sch.uk



## Term Dates 2023 - 2024

### AUTUMN TERM 2023

**First day of term:** Tuesday 5<sup>th</sup> September (1<sup>st</sup> & 4<sup>th</sup> September INSET Days)

**Last day of term:** Friday 20<sup>th</sup> October

**Half-term break:** Monday 23<sup>rd</sup> to Tuesday 31<sup>st</sup> October

**Re-open:** Wednesday 1<sup>st</sup> November

**Last day of term:** Thursday 21<sup>st</sup> December (22<sup>nd</sup> December INSET Day)

### SPRING TERM 2024

**First day of term:** Monday 8<sup>th</sup> January

**Last day of term:** Friday 9<sup>th</sup> February

**Half-term break:** Monday 12<sup>th</sup> February to Friday 16<sup>th</sup> February

**Re-open:** Monday 19<sup>th</sup> February

**Last day of term:** Thursday 28<sup>th</sup> March

**Closed Friday 29<sup>th</sup> March (Bank Holiday)**

### SUMMER TERM 2024

**First day of term:** Monday 15<sup>th</sup> April

**Closed for one day Monday 6<sup>th</sup> May (Bank Holiday)**

**Last day of term:** Friday 24<sup>th</sup> May

**Half-term break:** Monday 27<sup>th</sup> May to Friday 31<sup>st</sup> May

**Re-open:** Monday 3<sup>rd</sup> June

**Last day of term:** Friday 19<sup>th</sup> July (22<sup>nd</sup> & 23<sup>rd</sup> July INSET Days)

*Beulah Junior is committed to safeguarding and promoting the welfare of all our pupils and expect all staff and volunteers to share this commitment.*

*Head Teacher – Mrs B Warwick*



# Beulah Junior School Term Dates 2023 to 2024



<b>Holiday</b>	<b>Bank Holiday</b>	<b>INSET Day</b>
----------------	---------------------	------------------

August 2023						
M	T	W	T	F	S	S
	1	2	3	4	5	6
7	8	9	10	11	12	13
14	15	16	17	18	19	20
21	22	23	24	25	26	27
28	29	30	31			

September 2023						
M	T	W	T	F	S	S
				1	2	3
4	5	6	7	8	9	10
11	12	13	14	15	16	17
18	19	20	21	22	23	24
25	26	27	28	29	30	

October 2023						
M	T	W	T	F	S	S
						1
2	3	4	5	6	7	8
9	10	11	12	13	14	15
16	17	18	19	20	21	22
23	24	25	26	27	28	29
30	31					

November 2023						
M	T	W	T	F	S	S
		1	2	3	4	5
6	7	8	9	10	11	12
13	14	15	16	17	18	19
20	21	22	23	24	25	26
27	28	29	30			

December 2023						
M	T	W	T	F	S	S
				1	2	3
4	5	6	7	8	9	10
11	12	13	14	15	16	17
18	19	20	21	22	23	24
25	26	27	28	29	30	31

January 2024						
M	T	W	T	F	S	S
1	2	3	4	5	6	7
8	9	10	11	12	13	14
15	16	17	18	19	20	21
22	23	24	25	26	27	28
29	30	31				

February 2024						
M	T	W	T	F	S	S
			1	2	3	4
5	6	7	8	9	10	11
12	13	14	15	16	17	18
19	20	21	22	23	24	25
26	27	28	29			

March 2024						
M	T	W	T	F	S	S
				1	2	3
4	5	6	7	8	9	10
11	12	13	14	15	16	17
18	19	20	21	22	23	24
25	26	27	28	29	30	31

April 2024						
M	T	W	T	F	S	S
1	2	3	4	5	6	7
8	9	10	11	12	13	14
15	16	17	18	19	20	21
22	23	24	25	26	27	28
29	30					

May 2024						
M	T	W	T	F	S	S
		1	2	3	4	5
6	7	8	9	10	11	12
13	14	15	16	17	18	19
20	21	22	23	24	25	26
27	28	29	30	31		

June 2024						
M	T	W	T	F	S	S
					1	2
3	4	5	6	7	8	9
10	11	12	13	14	15	16
17	18	19	20	21	22	23
24	25	26	27	28	29	30

July 2024						
M	T	W	T	F	S	S
1	2	3	4	5	6	7
8	9	10	11	12	13	14
15	16	17	18	19	20	21
22	23	24	25	26	27	28
29	30	31				